



Total vegetation control

For non cropland
and orchard crops

LOCAL INTELLIGENCE.
GLOBAL SCALE.

Lonza

www.lonza.co.nz



ACTIVE INGREDIENTS

TAG G2 contains 350g/litre terbuthylazine, 60g/litre amitrole, 15g/litre oxyfluorfen and 100g/litre glyphosate in the form of a suspension concentrate.

MODE OF ACTION

The four active ingredients in TAG G2 work together through different modes of action to ensure that even the hardest to control weeds are killed. TAG G2 inhibits bud formation, disrupts protein and chlorophyll biosynthesis and disrupts photosynthesis. TAG G2 will knockdown existing weeds via uptake through leaves, shoots and roots, while also providing control of new weeds as they germinate.

FORMULATION TECHNOLOGY

TAG G2 is a modern liquid formulation to give quick knockdown and extended residual weed control in just one pass. TAG G2 stores well and mixes easily.

WEED SPECTRUM

TAG G2 will control nearly all annual and perennial grass and broadleaf weeds. TAG G2 will also control young brushweeds such as barberry, blackberry, broom and gorse.

The list of weeds controlled includes;

- | | |
|------------------|-----------------|
| • Barnyard grass | • Bristle grass |
| • Buttercups | • Cleavers |
| • Clovers | • Cornbind |
| • Dandelion | • Docks |
| • Fathen | • Fennel |
| • Fleabane | • Hemlock |
| • Indian Doab | • Inkweed |
| • Kikuyu | • Nettles |
| • Nightshade | • Ragwort |
| • Redroot | • Rushes |
| • Thistles | • Sorrel |
| • Storksbill | • Summer grass |
| • Wandering Jew | • Willow weed |
| • Wireweed | • Spurrey |

WHERE TO USE TAG G2

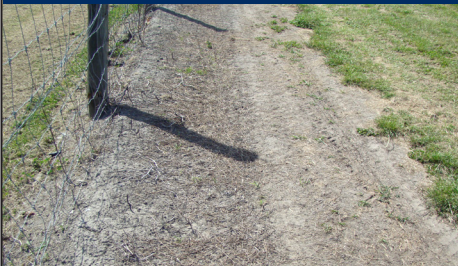
- | | |
|--------------------|-------------------|
| • Around buildings | • Driveways |
| • Dry watercourses | • Crop fences |
| • Culverts | • Electric fences |
| • Farm tracks | • Headlands |
| • Machinery yards | • Paths |
| • Road markers | • Shelter belts |
| • Stockyards | • Traffic signs |

CONTROLLING MALLOW - 6 MONTHS AFTER SPRAYING.

UNTREATED



TAG G2



F.A.Q

Q. Can I spray under my shelterbelt?

A. TAG G2 can be safely used as a ground treatment under well-established shelter species at a rate up to 10 litres/Ha.

Q. Will TAG G2 work on dusty or dirty weeds?

A. Weed material should be free of dust and dirt so before spraying wait for rainfall or significant new growth. Alternatively, add a non-ionic surfactant to the tank

HERBICIDE RESISTANCE MANAGEMENT

Herbicide resistance is becoming an increasing concern in New Zealand agriculture where the over reliance on a single mode of action herbicide over several years will ultimately result in that herbicide no longer working.

TAG G2 contains four actives with different modes of action, which provides overlapping activity across a range of weeds that are attacked from more than one angle. This means that the life cycle of these important herbicide groups will be prolonged. TAG G2 is an important tool in any herbicide resistance management plan.



F.A.Q

Q. Can I spray beside a waterway with TAG G2?

A. Beside a waterway is OK so long as the slope of the terrain prevents leaching into it.

Q. How long will TAG G2 last?

A. Length of weed control depends on the rate applied, soil type, rainfall and type of weeds likely to germinate. In general 10 L/Ha provides 2 to 3 months control - can be longer in light soils under low rainfall. 20 - 25 L/Ha can provide 12 months of control before significant weed escapes are seen. Application timing can improve results as summer applications tend to last for a shorter period.

GETTING THE BEST OUT OF



Application: Mix in sufficient water to obtain complete and even coverage of weeds and bare ground. Maintain agitation throughout spraying. Do not use around any trees or vines less than 3 years old. Do not allow the spray mixture to contact any crop foliage, fruit or green bark.

Timing: Apply in spring or autumn when all weeds are growing actively, and while soil is moist. Do not apply under drought conditions. For orchard crops apply in spring or autumn as a directed spray to the base of the tree. Apply when kiwifruit, grapevines and berryfruit are dormant.

Compatibility: May be tank mixed with most other herbicides.

Knockdown & Residual control:

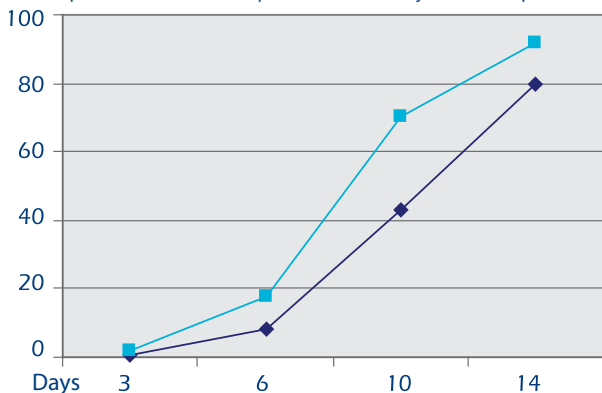
Complete coverage of weeds and bare ground is essential for residual control. If weeds are very dense, long term weed control will be reduced, due to lack of herbicide reaching the soil. Care must be taken around non-absorbent surfaces such as cobblestones, driveways and concrete paths so that runoff does not reach the roots of desirable plants.

Containing four active ingredients within one superior formulation, **TAG G2** kills stubborn weeds much faster than ordinary combination products. **TAG G2** attacks weeds via several overlapping modes of action and gives total vegetation control for up to 12 months.

PERCENT BROWNOUT

—■— TAG G2
—◆— ALTERNATIVE PRODUCT

The trial data below shows superior activity of TAG G2 on a mixed spectrum of weeds compared to an ordinary alternative product.



Testimonials are available at:

<https://lonzatagg2.co.nz/case-studies/>

THE TAG G2 ADVANTAGES

- ✓ Gives total vegetation control
- ✓ Attacks weeds via several overlapping modes of action
- ✓ Can be used under citrus, grapes, kiwifruit and pipfruit
- ✓ Residual activity for up to 12 months
- ✓ Saves time not having to respray



Lonza is a company of high-performing teams who are encouraged to act with an entrepreneurial spirit, on behalf of customers.

Lonza delivers solutions for crop protection, specialising in fungicides, insecticides, herbicides, foliar nutrients and additives. With a strong focus on the development, marketing and technical support of a broad range of smart agrichemical products targeted to the needs of farmers and growers. For more information visit www.lonza.co.nz

This brochure represents findings from research, technical experience and label claims. For full use instructions read the product label.

Lonza

www.lonza.co.nz